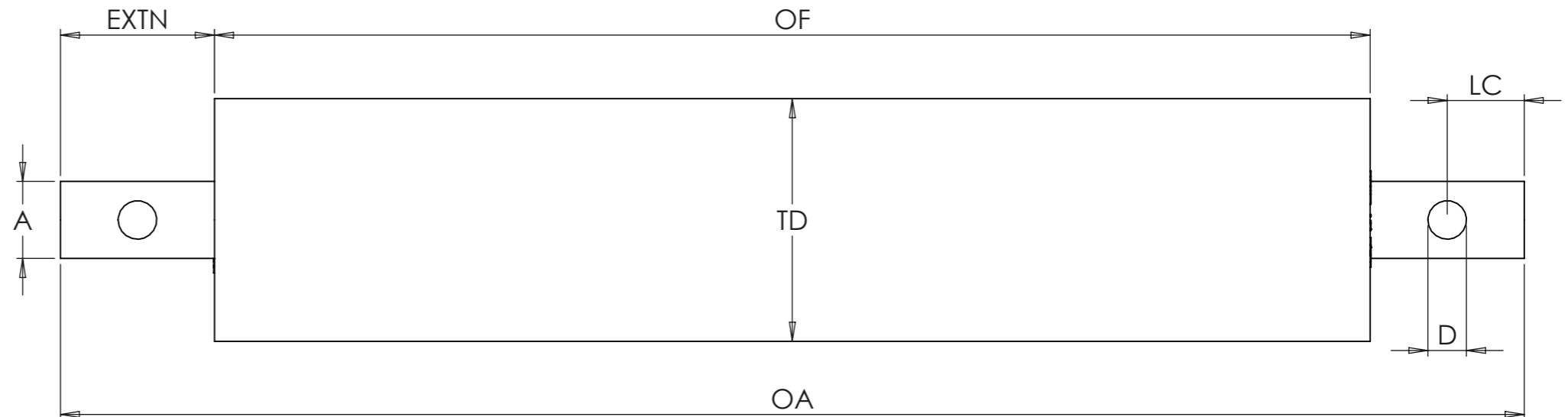


TD      A
M   LG  
**PRODUCT: IRXX - XX - AX10      ORDER DESC.: OFXX - OAXX - AX10XXXX**

IR SERIES - MILD STEEL INDUSTRIAL/BULK HANDLING ROLLER WITH CROSS DRILLED AXLE

DIMENSION	MEASUREMENT
TD	
A	
OF	
OA	
EXTN	
D	
LC	



TD	TUBE DIAMETER X THICKNESS	AXLE DIAMETER		
60	Ø60 X 3	20		-
63	Ø63.5 X 3	20	25	
70	Ø70 X 3	20	25	
76	Ø76 X 3	20	25	
803	Ø80 X 3	20	25	
89	Ø89 X 3	20	25	30
4	Ø102 X 3	20	25	30†
108	Ø108 X 3	20	25	30
127	Ø127 X 3		25	30†
5	Ø133 X 3		25	30
159	Ø159 X 4.5		30	40

PART CODE BREAKDOWN

TD = TUBE DIAMETER  
 A = AXLE DIAMETER  
 OF = OVER FACE  
 OA = OVER AXLE

AX10 = CROSS DRILLED AXLE  
 D = HOLE SIZE  
 LC = LOCATION OF HOLE

GENERATE ORDER CODE BELOW

QTY:

TD      A
D   LC  
 IR\_\_\_\_\_ - \_\_\_\_\_ - AX10      OF\_\_\_\_\_ - OA\_\_\_\_\_ - AX10\_\_\_\_\_

SUPPLIED SELF COLOUR AS STANDARD. IF BZP REQUIRED PLEASE ADVISE. ORDER CODE WILL NEED TO HAVE A "Z" AFTER TD. FOR EXAMPLE IR76Z.

† - ON APPLICATION

UNIT 3, ALBION WORKS  
MOOR STREET,  
BRIERLEY HILL,  
WEST MIDS,  
ENGLAND,  
DY5 3SZ



UNLESS OTHERWISE SPECIFIED: DIMENSIONS ARE IN MILLIMETERS		DEBURR AND BREAK SHARP EDGES	DO NOT SCALE DRAWING
NAME	REVISION	DATE	FINISH: SELF COLOUR
DRAWN	K JEAVONS	1	12/01/2024
WEIGHT:			MATERIAL: MILD STEEL

COPYRIGHT RESERVED	REVISION: 1
TITLE: <b>IR SERIES</b>	
DWG NO. <b>IR-ORDER-AX10</b>	A3
SCALE:1:5	SHEET 1 OF 1