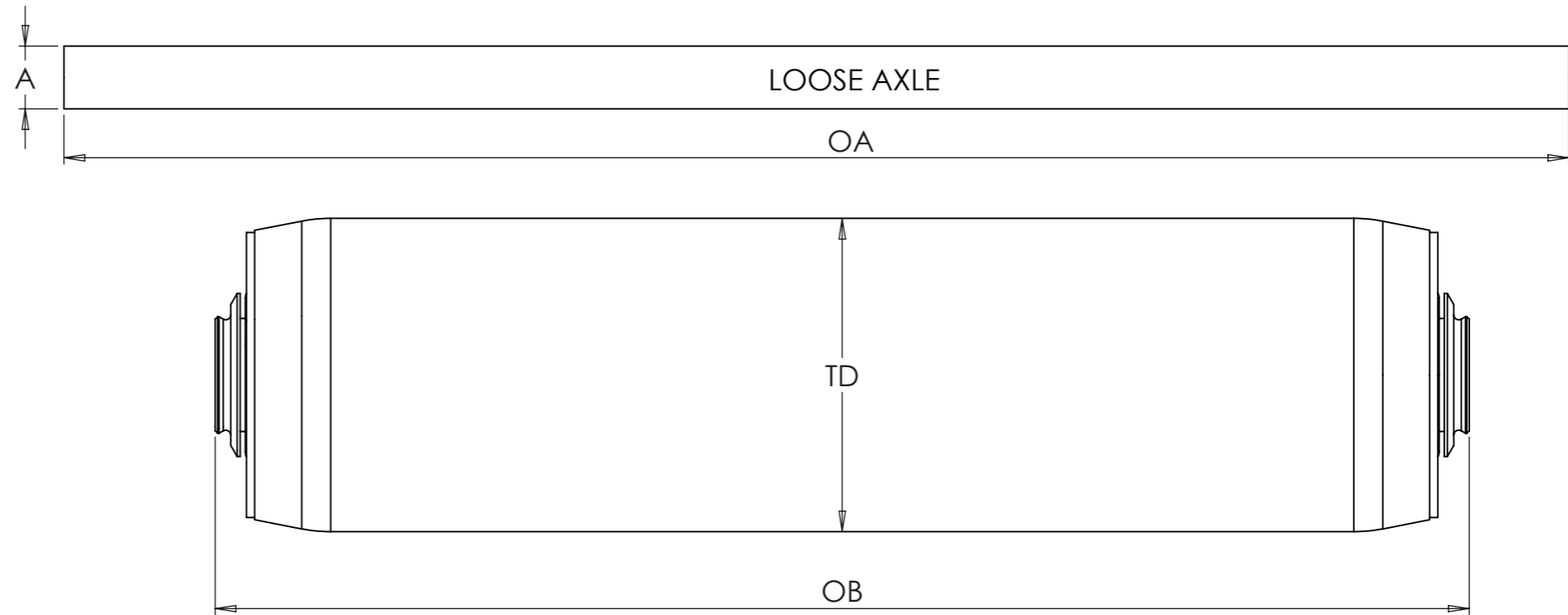


ORDER CODE: PR - XX - XX - AX9 - XXX - XXX

PR1600 SERIES - MILD STEEL LOOSE AXLE GRAVITY ROLLER - GREASED BEARINGS



DIMENSION	MEASUREMENT
TD	
A	
OB	
OA	

BELOW ARE TUBE DIAMETER OPTIONS, PLEASE SELECT AXLE FROM THE SAME ROW

TUBE DIAMETER & THICKNESS	AXLE DIAMETER									
	HEX	Ø	Ø	HEX	Ø	Ø	Ø	Ø	Ø	Ø
50 x 1.5	8 HEX	10	11	11 HEX	12		15		17	
51 x 2.0	8 HEX	10	11	11 HEX	12		15		17	
51 x 3.0	8 HEX	10	11	11 HEX	12		15		17	
60 x 2.0		10	11	11 HEX	12		15			
60 x 3.0									17	
63.5 x 3.0						14		16		20
70 x 3.0									17	
80 x 3.0										20

PART CODE BREAKDOWN

PR = GREASED BEARINGS
 TD = TUBE DIA (E.G. 50)
 A = AXLE DIA (E.G. 10)
 AX9 = LOOSE AXLE
 OB = OVER BEARING (E.G. 400MM)
 OA = OVER AXLE (E.G. 440MM)

EXAMPLE: **PR-50-10-AX9-400-440**
 FOR A Ø50 ROLLER WITH 10MM LOOSE AXLE. WITH AN OVERBEARING LENGTH OF 400MM AND AN AXLE LENGTH OF 440MM

UNIT 3, ALBION WORKS
 MOOR STREET,
 BRIERLEY HILL,
 WEST MIDS,
 ENGLAND,
 DY5 3SZ

AED Rollers
 Best rollers Best service

UNLESS OTHERWISE SPECIFIED: DIMENSIONS ARE IN MILLIMETERS		DEBURR AND BREAK SHARP EDGES	DO NOT SCALE DRAWING	DWG NO.	
NAME	REVISION	DATE	FINISH: BZP	PR-ORDER-AX9	A3
DRAWN	K JEAVONS	1	MATERIAL: MILD STEEL		
SCALE: 1:2			SHEET 1 OF 1		