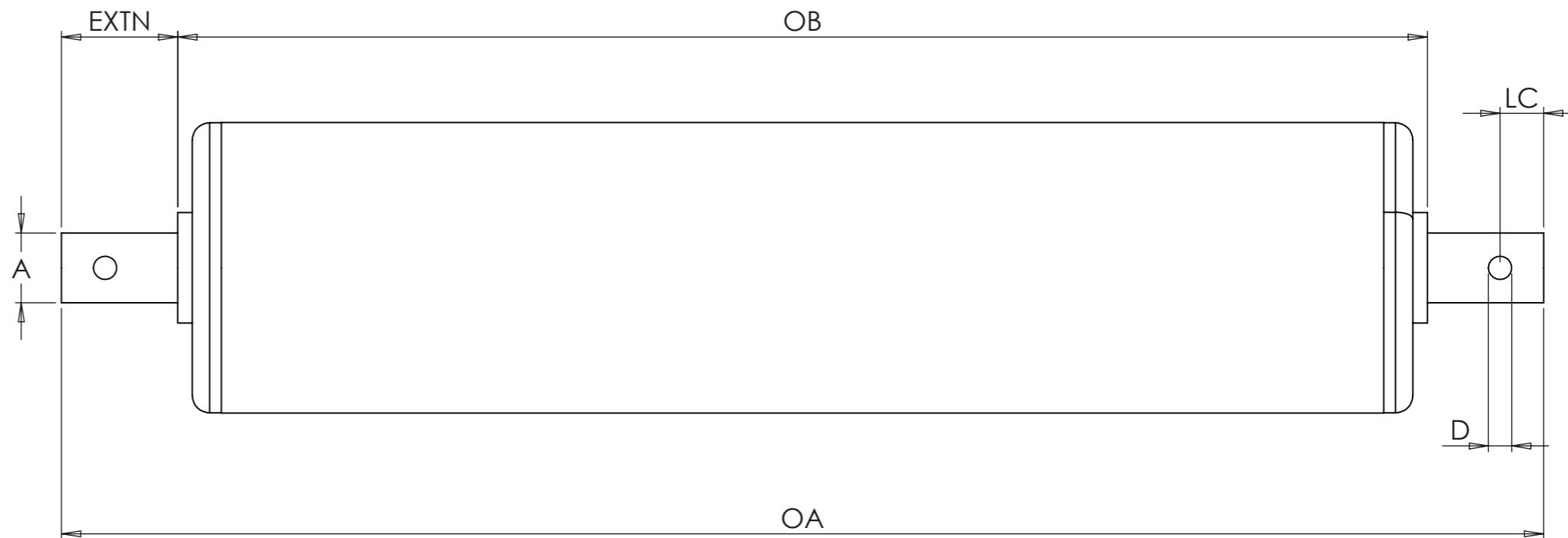


PRODUCT: SSPR-^{TD}XXKTR-^AXX-AX10 ORDER DESC.:OBXX-OAXX-AX10^DLC^{LC}XXXX

SSPR-KTR1700 SERIES - STAINLESS STEEL ROLLER WITH CROSS DRILLED AXLE

DIMENSION	MEASUREMENT
TD	
A	
OB	
OA	
EXTN	
D	
LC	



PART CODE BREAKDOWN

BELOW ARE TUBE DIAMETER OPTIONS, PLEASE SELECT AXLE FROM THE SAME ROW

TD	TUBE DIAMETER & THICKNESS	ROUND AXLE (A)					HEX AXLE (A)	
		∅	∅	∅	∅	∅	HEX	HEX
35	∅35 X 1.2	8					8 HEX	
40	∅40 X 1.5	8	10	12				11 HEX
50	∅50 X 1.5		10	12	14			11 HEX
50HD	∅50.8 X 3		10	12	14			11 HEX
60	∅60 X 2.6		10	12	14			11 HEX
63	∅63.5 X 3					20		

TD = TUBE DIAMETER
 A = AXLE DIAMETER
 OB = OVER BEARING
 OA = OVER AXLE

AX10 = CROSS DRILLED AXLE
 D = DIAMETER OF HOLE
 LC = HOLE LOCATION

GENERATE ORDER CODE BELOW

QTY:

SSPR____KTR-____-AX10

OB____-OA____-AX10____

UNIT 3, ALBION WORKS
 MOOR STREET,
 BRIERLEY HILL,
 WEST MIDS,
 ENGLAND,
 DY5 3SZ



COPYRIGHT RESERVED		REVISION: 1
TITLE: SSPR-KTR-1700 SERIES		
DWG NO. SSPR-ORDER-AX10	A3	
SCALE:1:2	SHEET 1 OF 1	

UNLESS OTHERWISE SPECIFIED: DIMENSIONS ARE IN MILLIMETERS			DEBURR AND BREAK SHARP EDGES	DO NOT SCALE DRAWING
NAME	REVISION	DATE	FINISH:	
DRAWN K JEAVONS	1	12/01/2024	MATERIAL: STAINLESS	
WEIGHT:				